

COMMON INTEREST COMMUNITY NO. 206

WESTON WOODS ON THE RIVER

EXHIBIT B TO AMENDED AND RESTATED DECLARATION

DESCRIPTION OF COMMON ELEMENTS

Lot 32, Block 1, Weston Woods on the River; Lot 27, Block 1, and Lot 6, Block 2, Weston Woods on the River 2nd Addition; Lot 23, Block 1, Weston Woods on the River 3rd Addition; and Outlot A, The River Runs By It; all in Anoka County, Minnesota.

COMMON INTEREST COMMUNITY NO. 206

WESTON WOODS ON THE RIVER

EXHIBIT A TO AMENDED AND RESTATED DECLARATION

DESCRIPTION OF PROPERTY/SCHEDULE OF UNITS

The legal description of the Property is as follows:

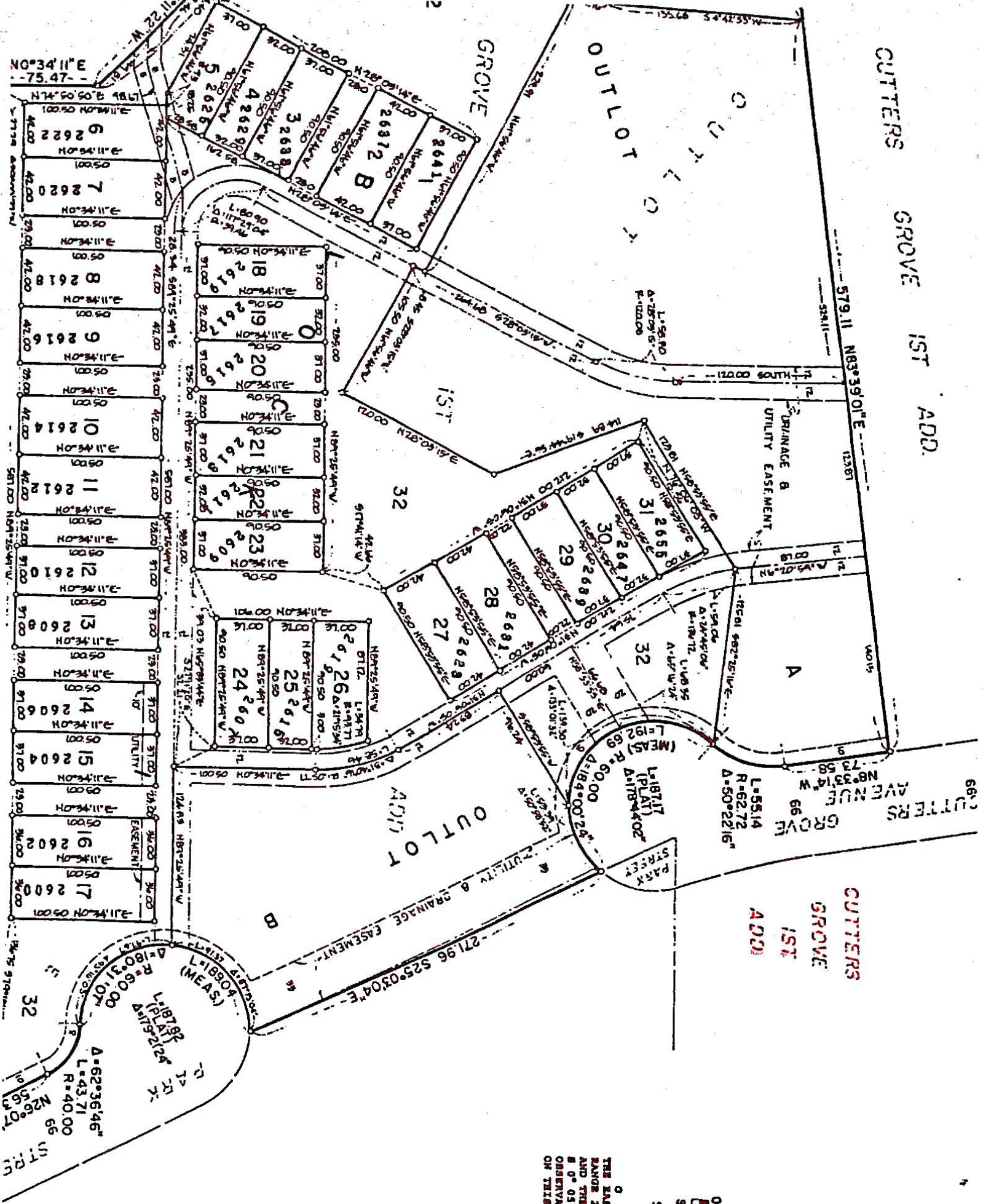
Lots 1 through 32, inclusive, Block 1, Weston Woods on the River; Lots 1 through 27, inclusive, Block 1, and Lots 1 through 6, inclusive, Block 2, Weston Woods on the River 2nd Addition; Lots 1 through 23, inclusive, Block 1, Weston Woods on the River 3rd Addition; and Outlot A, The River Runs By It; all in Anoka County, Minnesota.

The Units consist of the following platted lots:

Lots 1 through 31, inclusive, Block 1, Weston Woods on the River; Lots 1 through 26, inclusive, Block 1, and Lots 1 through 5, inclusive, Block 2, Weston Woods on the River 2nd Addition; and Lots 1 through 22, inclusive, Block 1, Weston Woods on the River 3rd Addition; all in Anoka County, Minnesota.

CUTTERS GROVE 1ST ADD.

CUTTERS GROVE 1ST ADD.



○ DENOTES IN THE EAST LINE OF RANGE 25, BETWEEN AND THE EAST 1/4, S 0° 05' 57" W, AS OBSERVATION, AND ON THIS PLAT ARE



2ND ADDITION

CITY OF ANOKA
COUNTY OF ANOKA



12-17-96
change to
Relly Bardsy

80 120

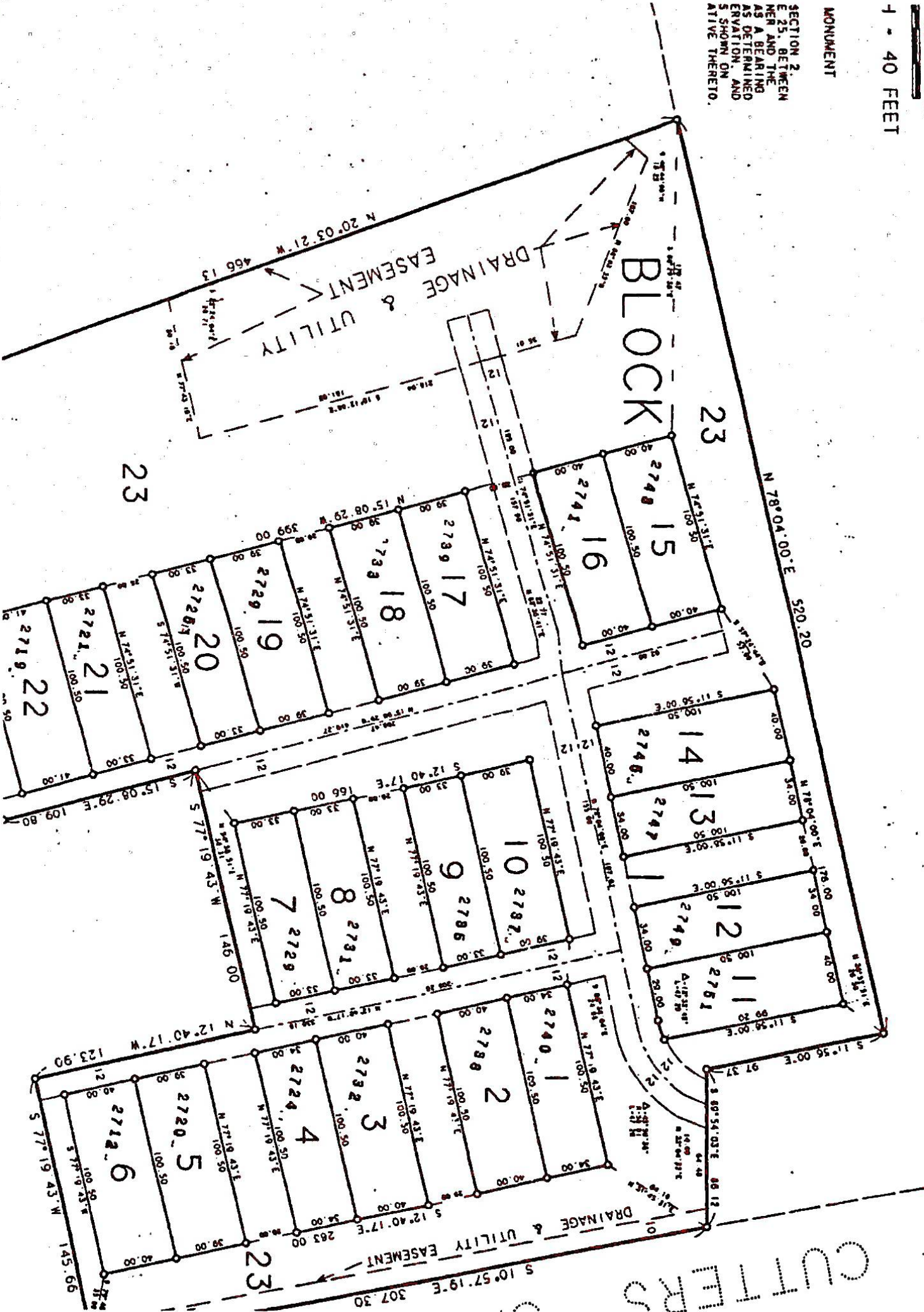
1 - 40 FEET

MONUMENT

SECTION 2,
E. 25, BETWEEN
MER AND THE
AS A BEARING
AS DETERMINED
ERATION, AND
S SHOWN ON
ATIVE THERETO.

CITY OF AIRBORNE
3rd Addition

CUTTERS



23

23

23

23

23

23

23

23

23